



REINFORCED TAPE

Description

The reinforced corner tape is used to strengthen the angles of plasterboards.

Caractéristiques

Material : Paper & Steel
Density (kg/m²) 0,142

Breaking load : 15 kg
Wet breaking load : 7 kg

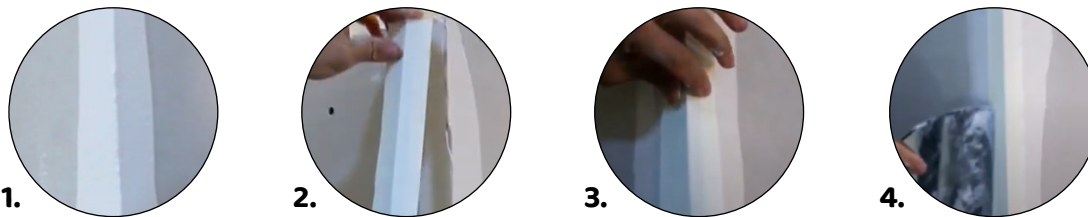
Advantages

- **Classic and quick installation**
- **Self-adhesive**
- **High resistance**

Informations

Réf	Designation	Dimensions	Weight (KG)	Rolls/Carton	Carton/Pallet	Public Price	EAN Code
03044	Bande armée	51mm x 30ml	654	10	380	14.95€	3760324607206

Applications



1. Apply a layer of joint compound adhesive on both sides of the corner.
2. Position the reinforced corner tape.
3. Fold the tape to form an angle and press it onto the joint compound adhesive.
4. Cover the reinforced corner tape with additional joint compound adhesive.



More informations